

【Evacuation Information and Behavior on Alert Level】

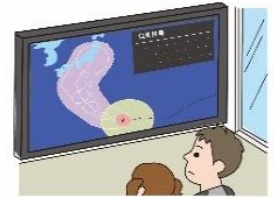
1. Let's confirm your home location on the hazard map.



Probability Warnings (Alert Level 1) is issued by the Japan Meteorological Agency.



Heavy Rain, Flood or Storm Surge Advisories (Alert Level 2) is issued by the Japan Meteorological Agency.



2. If located within a colored area on the hazard map, you must get somewhere safe.

※ In case of the following information (alert level 3 and 4), you must evacuate from affected areas immediately.



Elderly people, those with disabilities, and others should evacuate from affected areas when Evacuation of the Elderly, Etc. (Alert Level 3) is issued by Yokohama town.



All residents should evacuate from affected areas when or before Evacuation Instruction (Alert Level 4) is issued by Yokohama town.

⇒ The goal of evacuation is to get somewhere safe.

3. In a disaster situation, you must protect yourself.

※ In case of the following information (alert level 5), you must do your best to get somewhere safe.



□Emergency Safety Measures (Alert Level 5) indicates a life-threatening situation in which you can no longer safely evacuate. Please evacuate before Alert Level 5 is issued by Yokohama town.



□Let's get somewhere safe immediately — home or neighborhood, etc.

Translation:

This place will be safe!



2階なら安全!
今夜はみんな2階で寝よう!



Translation:

The second floor will be safe!

Let's sleep on the second floor tonight!